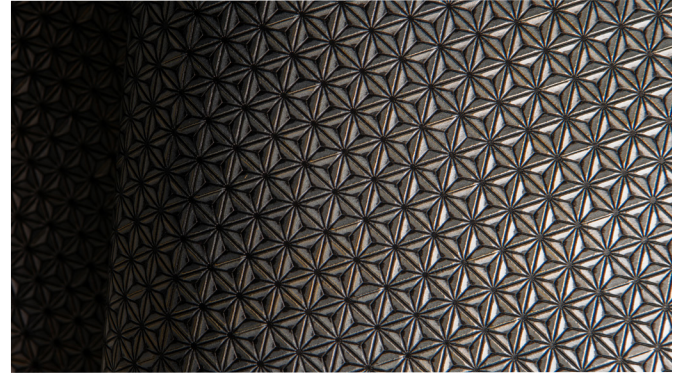


## EMBLEM

Emblem is a bold embossed leather featuring an intricate pattern of repeating geometric tessellations that form a kaleidoscopic effect. When paired with its two-tone metallic finish, this pattern evokes an endless field of stars in a clear night sky.

With a sharp tonal contrast that enhances the leather's sense of depth and highlights its ornate detailing, Emblem's signature colorway, Pewter, feels both modern and refined.



## SPECIFICATIONS

Country of Origin	Italy
Finish	Semi-aniline
Texture	Embossed Geometric Pattern
Configuration	Sides (Half Hides)
Average Hide Size	25 Square Feet
Thickness	1.0 - 1.2 mm
Tannage	Chromium Tanned
Horizontal Repeat	N/A
Vertical Repeat	36"

## PERFORMANCE

Emblem's robust semi-aniline finish helps protect its rich coloration from scratching and fading in sunlight.

## FLAME RESISTANCE

Please inquire about flame resistance certifications.